

Canderel Red Drums (2x500g)

Canderel Red 2x

PRODUCT DESCRIPTION

Aspartame based table top sweetener in a printed drum

Brand	Portion Solutions Ltd
Manufacturer Product Code	70103751
Product Type	Food
Product Category	Sugar and Sweeteners
Storage Type	Ambient
Erudus ID	ad004435fbda40aca70da88bf4fd955a
Specification Type	Legacy
Outer Case GTIN	5050415036021



INGREDIENTS

Ingredient Declaration

Dextrose, Sweeteners: Aspartame, Acesulfame K, Flavouring.

ALLERGENS

Product Contains:

Celery/Celeriac	No	Mustard	No
Cereals Containing Gluten	No	Nuts (Tree)	No
Barley	No	Almond nuts	No
Oats	No	Brazil nuts	No
Rye	No	Cashew nuts	No
Wheat (including Spelt and Khorasan)	No	Hazelnuts	No
Gluten content <20ppm	Yes	Macadamia (Queensland) nuts	No
Crustacea	No	Pecan nuts	No
Eggs	No	Pistachio nuts	No
Fish	No	Walnuts	No
Lupin	No	Peanuts	No
Milk	No	Sesame Seeds	No
Molluscs	No	Soybeans	No
		Sulphur Dioxide and Sulphites	No

SUPPLEMENTARY INGREDIENT INFORMATION

Palm Oil	No
Hydrogenated Vegetable Oil/Fat	No
GM Protein/DNA	No

ADDITIVES

Product Contains:

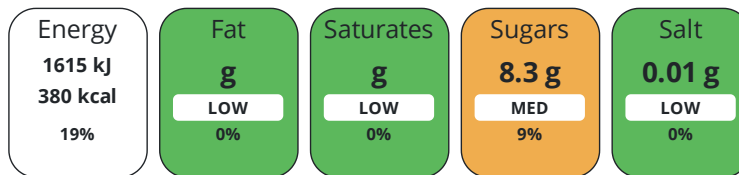
Artificial Antioxidants	No	Artificial Preservatives	No
Artificial Colours	No	Artificial Sweeteners	Yes
Artificial Flavour Enhancers	No		

DIET SUITABILITY

Suitable for Coeliacs	Yes	Halal Diet	No
Kosher Diet	No	Vegetarian Diet	Suitable for
Vegan Diet	Suitable for		

NUTRITIONAL
INFORMATION

Each 100g/ml portion contains:



of your reference intake.

Typical values per 100g/ml : Energy 380kcal / 1615kj

Nutrient	per 100g/ml	RI per 100g/ml
Energy (kJ)	1615 kJ	19%
Energy (kcal)	380 kcal	19%
Fat	0 g	0%
of which Saturates	0 g	0%
Carbohydrate	93.7 g	36%
of which Sugars	8.3 g	9%
of which Polyols	0 g	
of which Starch	0 g	
Fibre	0 g	
Protein	1.3 g	3%
Salt	0.01 g	0%

SUPPLEMENTARY
NUTRITIONAL
INFORMATION

HANDLING &
STORAGE
INFORMATION

Directions For Use

Alternative for sugar

Storage Instructions

Ambient Cool, Dry place

Shelf Life from Time of Production 730 Days

ACCREDITATIONS/
CERTIFICATIONS/
ASSURANCE
SCHEMES



ORIGIN

Product Country of Origin/Place of Other

Provenance

PRODUCT
CHARACTERISTICS

Standards Testing

Do you undertake trend analysis of microbiological results? No

Is shelf life testing undertaken? No

CONFIGURATION

Case Configuration

Inner Pack Configuration

Total Quantity of Inner Components in 2 Units

Outer Case

Is the Outer Case Splittable? No

PRODUCT WEIGHTS

Inner Component	
Variable Weight Consumer Item	No
Weight/Volume	
500g e	
Outer Case	
Outer Case Gross Weight	1.62 kg
Outer Case Net Weight	1 kg

PRODUCT DIMENSIONS

Inner Component	
Inner Component Depth	170 mm
Inner Component Width	170 mm
Inner Component Height	250 mm
Outer Case	
Outer Case Depth	175 mm
Outer Case Width	335 mm
Outer Case Height	255 mm

PALLET INFORMATION

Quantity of Cases Per Pallet Layer	17 Cases	Pallet Height	1.69 MTR
Quantity of Layers Per Pallet	6 Layers	Pallet Gross Weight	195 kg
Quantity of Cases Per Pallet	102 Cases		

PACKAGING

Inner Component Packaging						
Type	Materials	Weight	Recycled Plastic %	Recyclable	Returnable	Composite
Can	Plastic	21 g	- %			
Can	Aluminium	231 g	- %			
Can	Other	23 g	- %			
Outer Case Packaging						
Type	Materials	Weight	Recycled Plastic %	Recyclable	Returnable	Composite
Case	Plastic	27 g	- %			
Case	Paper/Cardboard	45 g	- %			
Transport Packaging						
Type	Materials	Weight	Recycled Plastic %	Recyclable	Returnable	Composite
Other	Wood	30000 g	- %			

OTHER INFORMATION

Manufacturer Comments
 2x500g drums in one outer cardboard tray = 1 unit (1 case) Outer tray and drums shrink wrapped

CONTACT INFORMATION

Address	Technical Contact
Portion Solutions Ltd	Magdalena Piekielek
Stafford Park 6	Head of Technical, Health & Safety
Stafford Park	Magdalena.piekielek@portionsolutions.co.uk
Telford	
Shropshire	<u>P. (Phone)</u> 01952979102
TF3 3AT	
England	
<u>P. (Phone)</u> 0044 (0)1952 234100	

The information on the [Erudus System](#) has been supplied by the manufacturers of the products and, whilst the owners of the Erudus System take steps to ensure the information is regularly updated, they give no warranty and no guarantee that the information is accurate. Product information and ingredients may change, please always read product labels carefully in addition to using the information provided by Erudus.

We do not accept liability for any inaccuracies or incorrect information contained on this site.
Please visit <http://www.erudus.com/terms-and-conditions> for full terms and conditions.