

# Canderel Red Cash & Carry tablet dispenser sachets - 6x300

Canderel Red 1800x

## PRODUCT DESCRIPTION

Single tablet contained in a printed sachet

<b>Brand</b>	Portion Solutions Ltd
<b>Manufacturer Product Code</b>	60111856 (TL586R)
<b>Product Type</b>	Food
<b>Product Category</b>	Sugar and Sweeteners
<b>Storage Type</b>	Ambient
<b>Erudus ID</b>	2673c29dff9744e0a7b12a1365489f77
<b>Specification Type</b>	Legacy
<b>Inner Component GTIN</b>	7640110700358
<b>Outer Case GTIN</b>	7640110700358



## INGREDIENTS

### Ingredient Declaration

Lactose (from **MILK**), sweeteners: aspartame\* (10%), acesulfame-K (6.7%), stabilisers: microcrystalline cellulose, cross-linked sodium carboxy methyl cellulose, flavouring.

\*Contains a source of phenylalanine.

## ALLERGENS

Product Contains:

<b>Celery/Celery</b>	No	<b>Mustard</b>	No
<b>Cereals Containing Gluten</b>	No	<b>Nuts (Tree)</b>	No
<b>Barley</b>	No	<b>Almond nuts</b>	No
<b>Oats</b>	No	<b>Brazil nuts</b>	No
<b>Rye</b>	No	<b>Cashew nuts</b>	No
<b>Wheat (including Spelt and Khorasan)</b>	No	<b>Hazelnuts</b>	No
<b>Gluten content &lt;20ppm</b>	Yes	<b>Macadamia (Queensland) nuts</b>	No
<b>Crustacea</b>	No	<b>Pecan nuts</b>	No
<b>Eggs</b>	No	<b>Pistachio nuts</b>	No
<b>Fish</b>	No	<b>Walnuts</b>	No
<b>Lupin</b>	No	<b>Peanuts</b>	No
<b>Milk</b>	Yes	<b>Sesame Seeds</b>	No
<b>Molluscs</b>	No	<b>Sulphur Dioxide and Sulphites</b>	No

### Additional Allergen Information

Contains MILK

## SUPPLEMENTARY INGREDIENT INFORMATION

<b>Palm Oil</b>	No
<b>Hydrogenated Vegetable Oil/Fat</b>	No
<b>GM Protein/DNA</b>	No

ADDITIVES

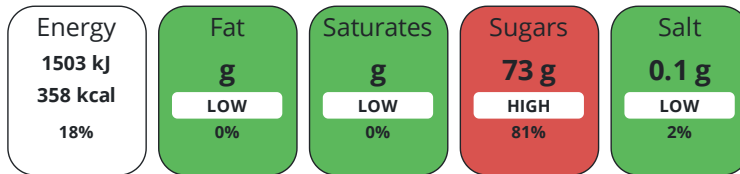
Product Contains:

<b>Artificial Antioxidants</b>	No	<b>Artificial Flavourings</b>	No
<b>Artificial Colours</b>	No	<b>Artificial Preservatives</b>	No
<b>Artificial Flavour Enhancers</b>	No	<b>Artificial Sweeteners</b>	Yes
<b>Suitable for Coeliacs</b>	Yes	<b>Halal Diet</b>	No
<b>Kosher Diet</b>	No	<b>Vegetarian Diet</b>	Suitable for
<b>Vegan Diet</b>	No		

DIET SUITABILITY

NUTRITIONAL INFORMATION

Each 100g/ml portion contains:



of your reference intake.

Typical values per 100g/ml : Energy 358kcal / 1503kj

Nutrient	per 100g/ml	RI per 100g/ml
<b>Energy (kJ)</b>	1503 kJ	18%
<b>Energy (kcal)</b>	358 kcal	18%
<b>Fat</b>	0 g	0%
of which Saturates	0 g	0%
<b>Carbohydrate</b>	79 g	30%
of which Sugars	73 g	81%
<b>Protein</b>	9.6 g	19%
<b>Salt</b>	0.1 g	2%

SUPPLEMENTARY NUTRITIONAL INFORMATION

HANDLING & STORAGE INFORMATION

**Directions For Use**

As a sugar alternative

**Storage Instructions**

Store in a cool dry place, away from direct sunlight

**Shelf Life from Time of Production** 730 Days

ACCREDITATIONS/ CERTIFICATIONS/ ASSURANCE SCHEMES



ORIGIN

**Product Country of Origin/Place of** Czech Republic

**Provenance**

PRODUCT CHARACTERISTICS

Standards Testing

**Do you undertake trend analysis of microbiological results?** No

**Is shelf life testing undertaken?** No

CONFIGURATION	Case Configuration		Inner Pack Configuration				
	<b>Total Quantity of Inner Components in Outer Case</b>	1800 Units					
	<b>Is the Outer Case Splittable?</b>	No					
PRODUCT WEIGHTS	Inner Component						
	<b>Variable Weight Consumer Item</b>	No					
	<b>Weight/Volume</b>						
	300 tablets in one dispenser						
	Outer Case						
PRODUCT DIMENSIONS	<b>Outer Case Gross Weight</b>		0.9 kg				
	<b>Outer Case Net Weight</b>		0.15 kg				
	Inner Component						
	<b>Inner Component Depth</b>		120 mm				
	<b>Inner Component Width</b>		110 mm				
	<b>Inner Component Height</b>		205 mm				
	Outer Case						
	<b>Outer Case Depth</b>		380 mm				
	<b>Outer Case Width</b>		230 mm				
PALLET INFORMATION	<b>Outer Case Height</b>		220 mm				
	<b>Quantity of Cases Per Pallet Layer</b>	12 Cases	<b>Pallet Height</b>	1.47 MTR			
	<b>Quantity of Layers Per Pallet</b>	6 Layers	<b>Pallet Gross Weight</b>	95 kg			
	<b>Quantity of Cases Per Pallet</b>	72 Cases					
	Inner Component Packaging						
PACKAGING	<b>Type</b>	<b>Materials</b>	<b>Weight</b>	<b>Recycled Plastic %</b>	<b>Recyclable</b>	<b>Returnable</b>	<b>Composite</b>
	Dispenser	Paper/Cardboard	0.09 g	- %			
	Outer Case Packaging						
	<b>Type</b>	<b>Materials</b>	<b>Weight</b>	<b>Recycled Plastic %</b>	<b>Recyclable</b>	<b>Returnable</b>	<b>Composite</b>
	Case	Paper/Cardboard	0.08 g	- %			
	OTHER INFORMATION CONTACT INFORMATION	Address		Technical Contact			
		Portion Solutions Ltd		Magdalena Piekielek			
		Stafford Park 6		Head of Technical, Health & Safety			
	Stafford Park		Magdalena.piekielek@portionsolutions.co.uk				
	Telford						
Shropshire		P: (Phone) 01952979102					
TF3 3AT							
England							
P: (Phone) 0044 (0)1952 234100							

The information on the [Erudus System](#) has been supplied by the manufacturers of the products and, whilst the owners of the Erudus System take steps to ensure the information is regularly updated, they give no warranty and no guarantee that the information is accurate. Product information and ingredients may change, please always read product labels carefully in addition to using the information provided by Erudus.

We do not accept liability for any inaccuracies or incorrect information contained on this site. Please visit <http://www.erudus.com/terms-and-conditions> for full terms and conditions.